



TK International
020 7794 8700
www.t-k.co.uk

Residential Sales
Residential Lettings
Property Management

Sales Office:
9 Heath Street
Hampstead
London NW3 6TP
E: sales@t-k.co.uk

Lettings Office:
16-18 Heath Street
Hampstead
London NW3 6TE
E: lettings@t-k.co.uk

tk.international
TK International
TK International

Est.
1998



Wycombe Gardens Golders Green NW11

A recently built and distinctively designed contemporary four/five bedroom, two bathroom house located on this desirable, quiet tree-lined avenue close to both the beautiful open spaces of Golders Hill Park as well as the thriving and vibrant shopping, dining, café and transport hub of Golders Green.

The ground floor provides a large reception room with views of the gardens and the lower floor boasts a beautiful fully fitted kitchen open plan to a dining/family room which enjoys direct access to the rear garden. In addition, there is a study/bedroom 4, guest WC (with plumbing for a shower), a generous size utility room and storage area.

The principal bedroom with en-suite bathroom & dressing room/bedroom 5 is on the first floor and the second floor offers two further bedrooms and a family bathroom.

This bright and generously proportioned home provides 2,312sqft / 215sqm (gross) of accommodation and enjoys a 73' south facing rear garden and off street parking for two cars.

£2,475,000

SOLE AGENT

Freehold

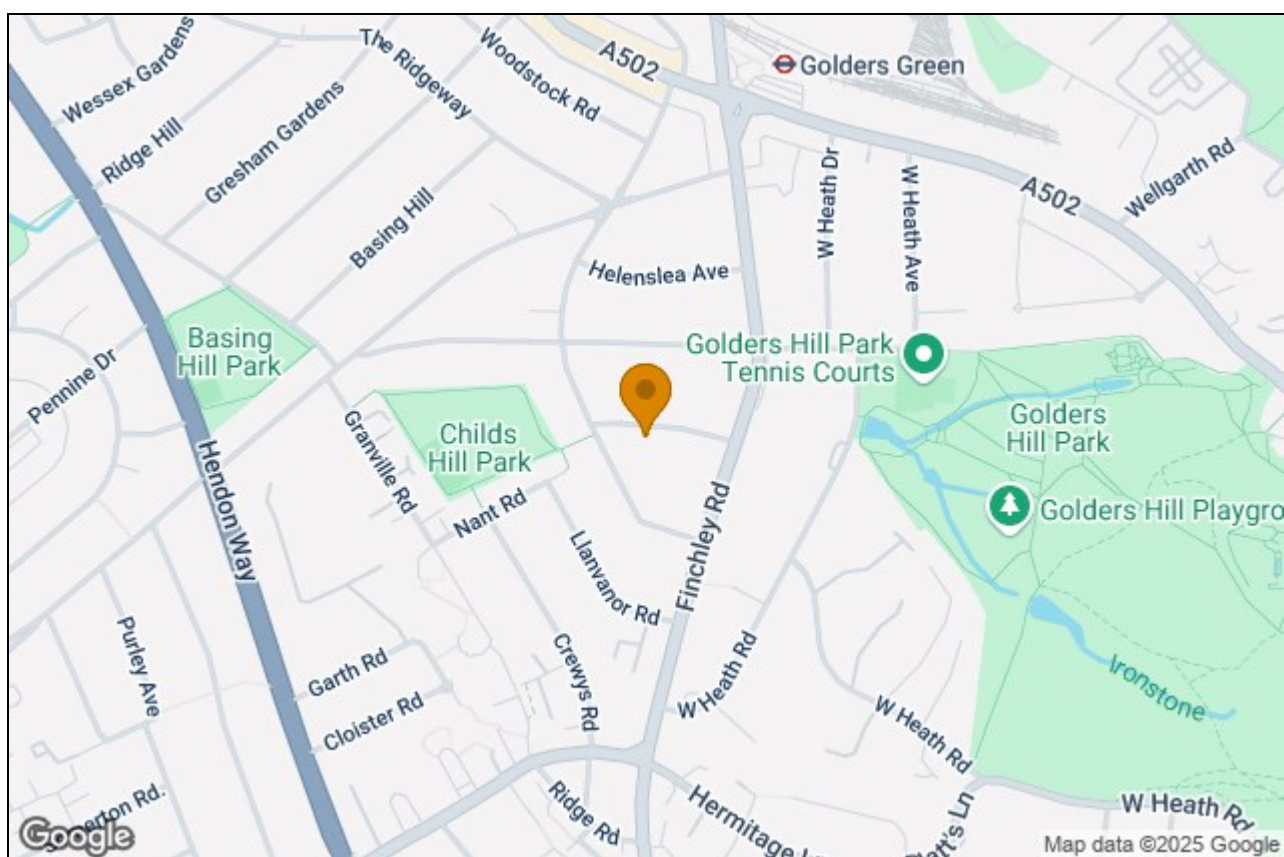








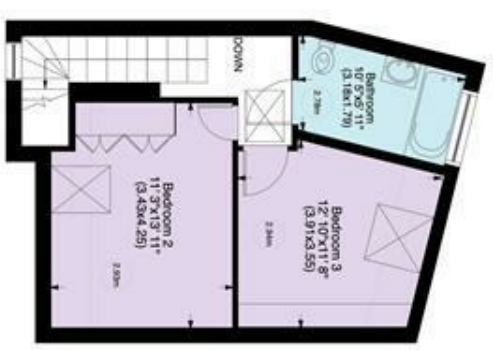
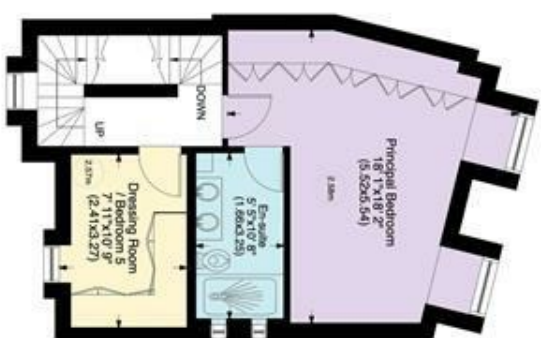
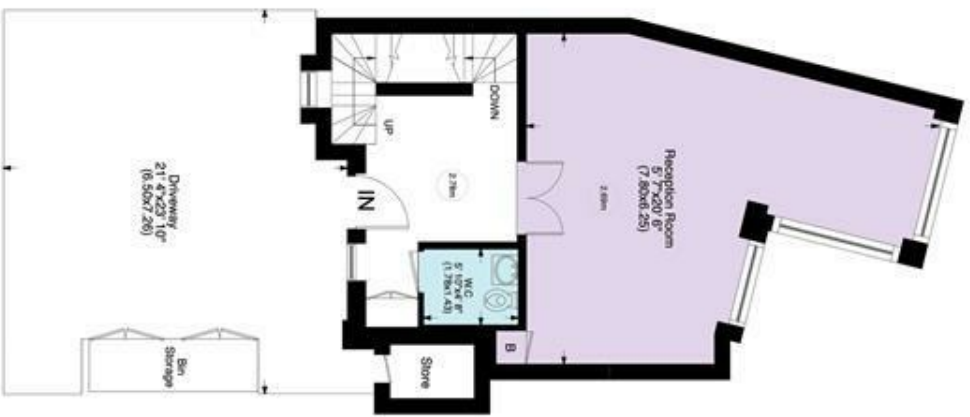
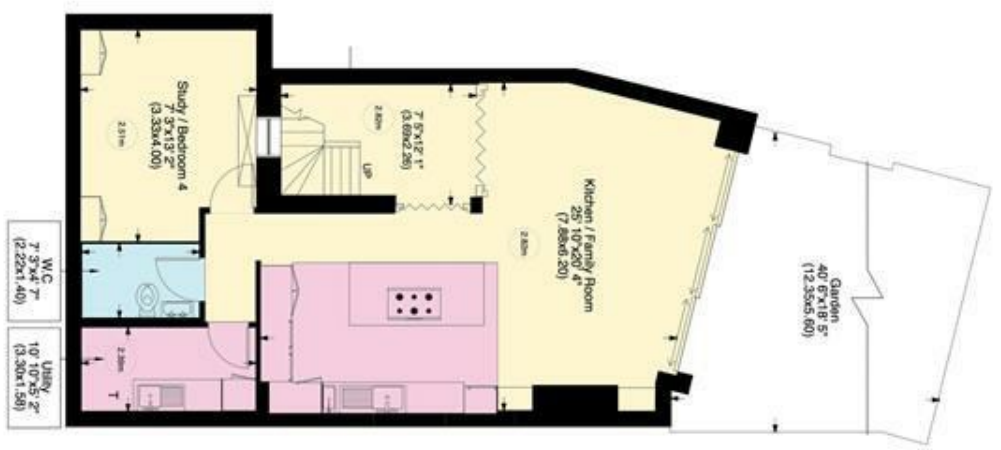






Wycombe Gardens NW11

Gross internal area (approx.)
215 Sq m (2312 Sq ft) Including Store and under 1.5m
208 Sq m (2237 Sq ft) Excluding Store and under 1.5m
For identification only, Not to Scale



Not to Scale, for guidance only and must not be relied upon as a statement to fact. All measurements are approximate only (and have been prepared in accordance with the current edition of the RICS Code of Measuring Practice).